



PARTS LIST FOR NO. 1 SERIES OFFSET PUSH TO START "1OT" TOOLS

Form Z325
Date 11-96

Housing And Motor

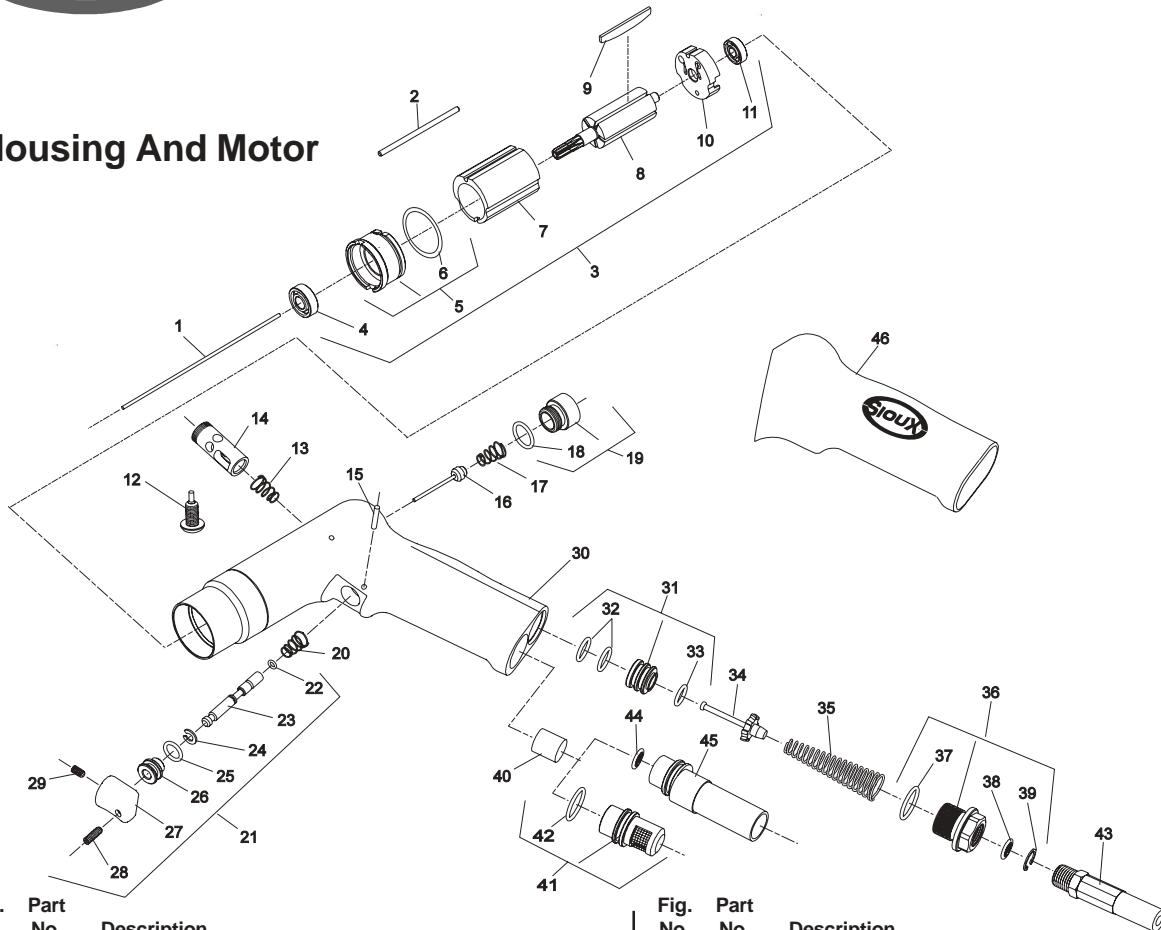


Fig. No.	Part No.	Description
1.	66074	Rod—Push (Short)(2600 RPM)
	66075	Rod—Push (Long)(725, 1000, 1400 RPM)
2.	66132	Pin
3.	66001	Assembly—Motor (8 Tooth)
4.	65998	Bearing—Ball
5.	65995	End Plate—Lower
6.	14391	Ring—"O"
7.	65994	Cylinder
8.	65993	Rotor (8 Tooth)
9.	66190	Vane (Set of 5)
10.	65997	End Plate—Upper
11.	10255	Bearing—Ball
12.	66297	Screw—Retaining
13.	21441	Spring
14.	66021	Valve
15.	66299	Pin—Groove
16.	66035	Assembly—Valve
17.	21441	Spring
18.	14312	Ring—"O"
19.	66246	Plug—Housing
20.	21441	Spring
21.	66300	Assembly—Trigger
22.	14349	Ring—"O"
23.	66247	Rod—Trigger
24.	21542	Ring—Retaining
25.	14311	Ring—"O"
26.	66245	Sleeve—Trigger
27.	66215	Trigger
28.	06188	Screw—#6-32 x 7/16 Set Socket Hex
29.	66295	Screw—#6-32 x 1/4 Set Socket Hex Flat Point

Fig. No.	Part No.	Description
30.	66769	Housing (Non-Reversing)(2600 RPM)
	66770	Housing (Non-Reversing)(725, 1000, 1400 RPM)
	66767	Housing (Reversing)(2600 RPM)
	66768	Housing (Reversing)(725, 1000, 1400 RPM)
31.	67399	Seat—Valve
32.	14312	Ring—"O"
33.	04252	Ring—"O"
34.	66251	Assembly—Valve
35.	66294	Spring—Tapered Compression
36.	66244	Adapter—Inlet
37.	14378	Ring—"O"
38.	30463	Screen
39.	21541	Ring—Retaining
40.	65082	Pad—Silencer
41.	66243	Deflector—Exhaust
42.	14378	Ring—"O"
43.	43223	Hose—1/4" Air
44.	30462	Screen
45.	66537	Assembly—Exhaust Hose
	65505	Cable Ties (4 per package)(Not Shown)
46.	66520	Grip

Remote
Exhaust

COMPLETE ASSEMBLY:

66237	Assembly—Housing (Non-Reversing) (2600 RPM)(Includes Figures 15 thru 42)
66238	Assembly—Housing (Non-Reversing) (725, 1000, 1400 RPM)(Includes Figures 15 thru 42)
66235	Assembly—Housing (Reversing)(2600 RPM) (Includes Figures 12 thru 42)
66236	Assembly—Housing (Reversing) (725, 1000, 1400 RPM)(Includes Figures 12 thru 42)

SIoux[™]
TOOLS INC.

*Order Quantity As Needed

Furnish Catalog, Serial, and Model Number When Ordering Parts

2901 FLOYD BOULEVARD ■ PO BOX 507 ■ SIOUX CITY, IOWA 51102-0507 ■

Printed In U.S.A.

Double Reduction (725, 1000, 1400 RPM)

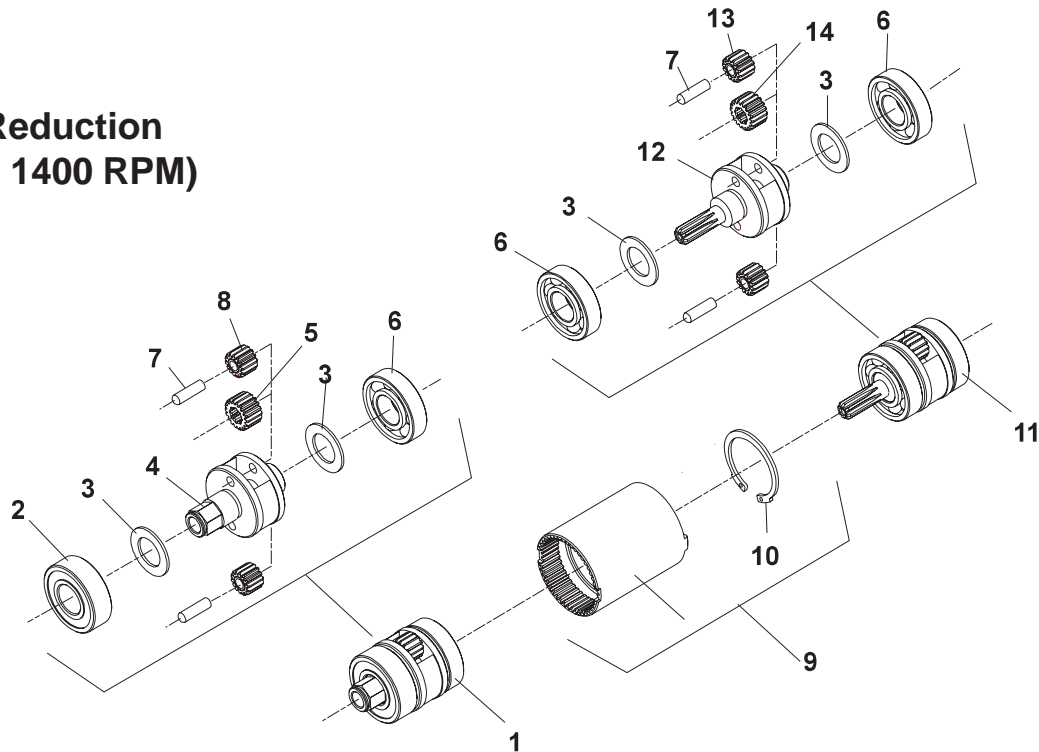


Fig. No.	Part No.	Description
1.	43298	Ass'y—Planetary (725 RPM)
	43301	Ass'y—Planetary (1000 RPM)
	66089	Ass'y—Planetary (1400 RPM)
2.	10246	Bearing—Ball
3.	25680	Washer (4)*
4.	44455	Carrier—Gear (725 RPM)
	44456	Carrier—Gear (1000 RPM)
	66081	Carrier—Gear (1400 RPM)
5.	66077	Gear—Pinion (1400 RPM)
6.	10241	Bearing—Ball (3)*
7.	30453	Pin (4)*
8.	19195	Gear—Idler (725 RPM)(2)*

Fig. No.	Part No.	Description
	19191	Gear—Idler (1000 RPM)(2)*
	66078	Gear—Idler (1400 RPM)(2)*
9.	19190	Gear—Ring
10.	21537	Ring—Retaining
11.	66087	1st Ass'y—Planetary (725, 1400 RPM)
	66088	1st Ass'y—Planetary (1000 RPM)
12.	66079	Carrier—Gear (725, 1400 RPM)
	66080	Carrier—Gear (1000 RPM)
13.	66078	Gear—Idler (725, 1000 1400 RPM)(2)*
14.	66077	Gear—Pinion (725, 1000 1400 RPM)

*Order Quantity As Needed

Single Reduction (2600 RPM)

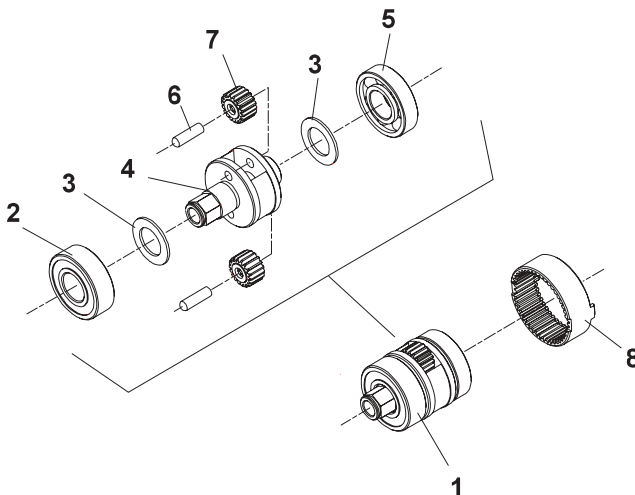


Fig. No.	Part No.	Description
1.	43298	Ass'y—Planetary (2600 RPM)
2.	10246	Bearing—Ball
3.	25680	Washer (2)*
4.	44455	Carrier—Gear (2600 RPM)
5.	10241	Bearing—Ball
6.	30453	Pin (2)*
7.	19195	Gear—Idler (2600 RPM)(2)*
8.	19189	Gear—Ring

*Order Quantity As Needed

Adjustable Clutch

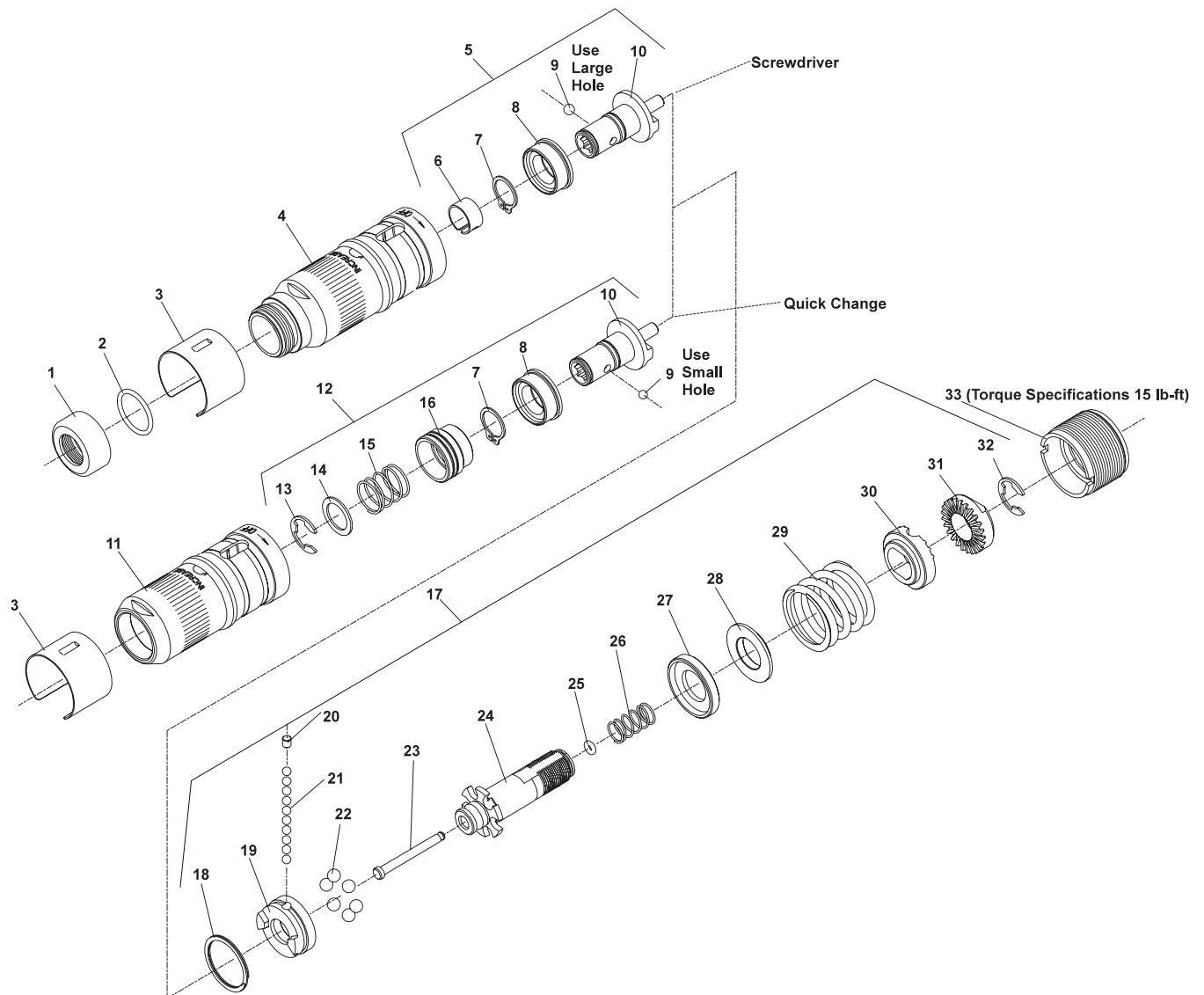


Fig. Part

No.	No.	Description
1.	54076	Protector—Thread
2.	14281	Ring—"O"
3.	66058	Cover
4.	66062	Case—Clutch (Screwdriver)
5.	66140	Ass'y—Bit Holder (Screwdriver)
6.	25854	Ring—Ball Retainer
7.	21451	Rinag—Retaining
8.	66059	Bushing—Spindle
9.	10902	Ball—5/32" Dia. (Screwdriver)
	10303	Ball—1/8" Dia. (Quick Change)
10.	66137	Holder—Bit
11.	66061	Case—Clutch (Quick Change)
12.	66141	Ass'y—Bit Holder (Quick Change)
13.	21493	Ring—Retaining
14.	35228	Washer
15.	41204	Spring
16.	66060	Collar
17.	66142	Ass'y—Adjustable Clutch (Push to Start)
18.	66063	Ring—Retaining
19.	66136	Jaw—Clutch
20.	66055	Plug

Fig. Part

No.	No.	Description
21.	10303	Ball—1/8" Dia. (10)*
22.	10306	Ball—3/16" Dia. (6)*
23.	66133	Plunger
24.	66134	Spindle—Clutch
25.	04209	Ring—"O"
26.	66057	Spring—Compression
27.	66054	Race—Thrust
28.	66053	Washer—Thrust
29.	66048	Spring (Silver)(725, 1000 RPM)(30-50 in-lb)
	66049	Spring (Blue)(1400 RPM)(15-35 in-lb)
	66050	Spring (Green)(2600 RPM)(2-20 in-lb)
30.	66047	Washer—Adjustment
31.	66046	Nut—Adjustment
32.	21493	Ring—Retaining
33.	66043	Adapter

Items Not Shown:

2366 Wrench—Clutch Adjustment

*Order Quantity As Needed



Torque Control Clutch

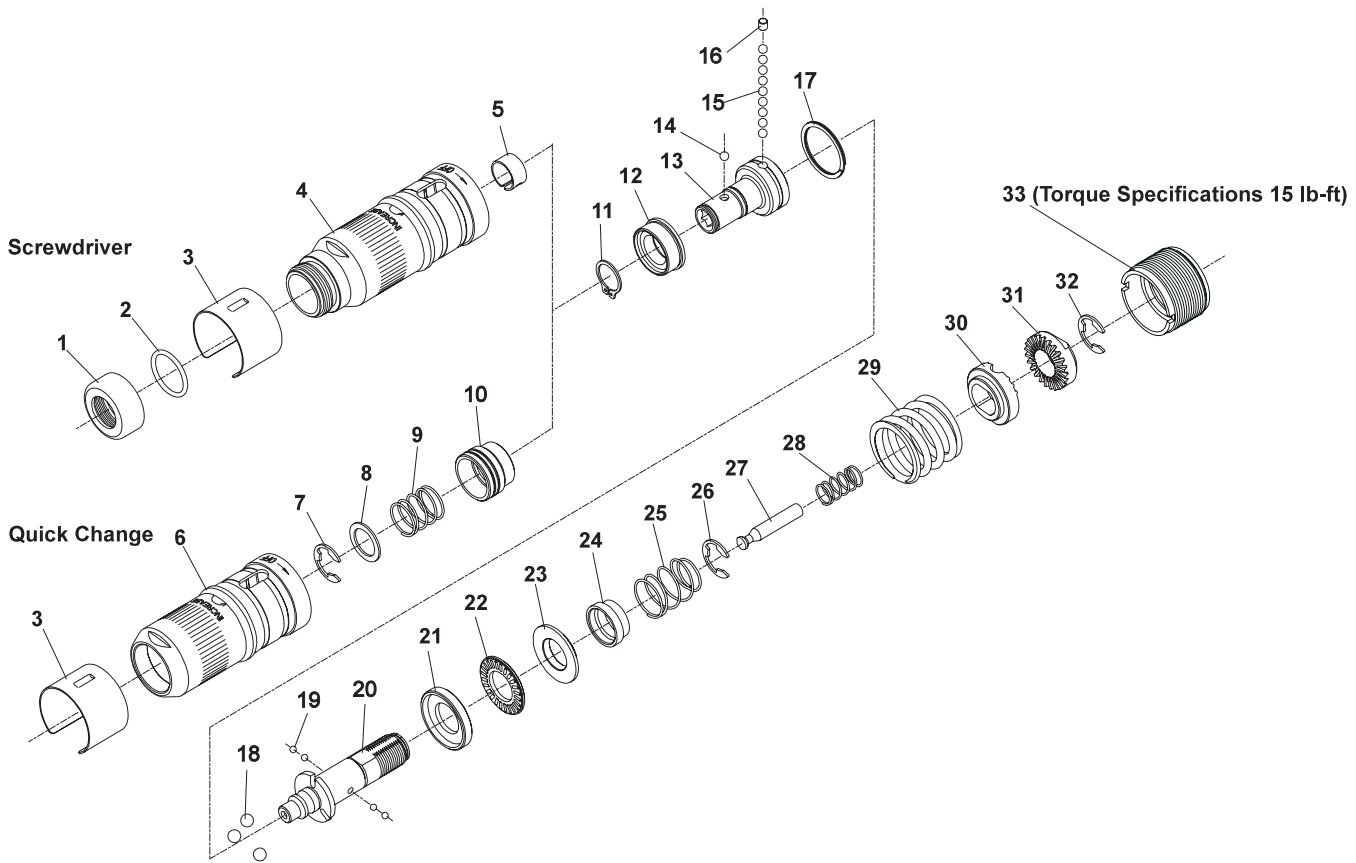


Fig. Part

No.	No.	Description
1.	54076	Protector—Thread
2.	14281	Ring—"O"
3.	66058	Cover
4.	66062	Case—Clutch (Screwdriver)
5.	25854	Ring—Ball Retainer
6.	66061	Case—Clutch (Quick Change)
7.	21493	Ring—Retaining
8.	35228	Washer
9.	41204	Spring
10.	66060	Collar
11.	21451	Ring—Retaining
12.	66059	Bushing—Spindle
13.	66045	Spindle—Bit
14.	10902	Ball—5/32" Dia. (Screwdriver - Use large hole in spindle)
	10303	Ball—1/8" Dia. (Quick Change - Use small hole in spindle)
15.	10303	Ball—1/8" Dia. (9)*
16.	66055	Plug
17.	66063	Ring—Retaining
18.	10306	Ball—3/16" Dia. (3)*
19.	10901	Ball—3/32" Dia. (4)*
20.	66044	Spindle—Clutch
21.	66054	Race—Thrust

Fig. Part

No.	No.	Description
22.	66064	Bearing—Thrust
23.	66053	Washer—Thrust
24.	66052	Sleeve—Ball
25.	66056	Spring—Compression
26.	21493	Ring—Retaining
27.	66051	Lock—Slide
28.	66057	Spring—Compression
29.	66048	Spring (Silver)(725, 1000 RPM)(30-50 in-lb)
	66049	Spring (Blue)(1400 RPM)(15-35 in-lb)
	66050	Spring (Green)(2600 RPM)(5-20 in-lb)
30.	66047	Washer—Adjustment
31.	66046	Nut—Adjustment
32.	21493	Ring—Retaining
33.	66043	Adapter

Items Not Shown:

2366 Wrench—Clutch Adjustment

Complete Assemblies:

- 66065 Ass'y—Torque Control Clutch Quick Change
(Includes Fig's. 7-32)
- 66066 Ass'y—Torque Control Clutch Screwdriver
(Includes Fig's. 5, 11-32)

*Order Quantity As Needed

**SIoux™
TOOLS INC.**

2901 FLOYD BOULEVARD ■ PO BOX 507 ■ SIOUX CITY, IOWA 51102-0507 ■

Printed In U.S.A.